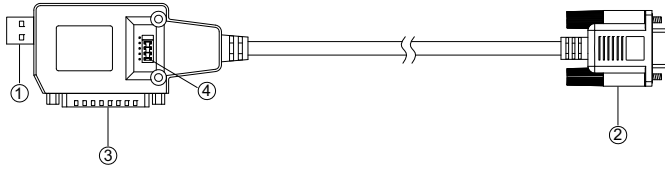


USB-CONVERTERCABLE

Overview

The USB-CONVERTERCABLE provides bi-directional connectivity between any standard USB compliant host system and Cermate inverters with built in RS232/422/485 interface accessible via the DB25 pin Com2 and with built in RS232 interface accessible via DB09 pin Com1 modular / interconnect communication port.

Hardware design of the USB-CONVERTERCABLE



- ① USB interface
- ② D-SUB 09M interface
- ③ D-SUB 25M interface
- ④ Jumper Selection

Specifications

Operating temperature range: 5 to 40°C
 Storage temperature: -20 to +70°C
 Total cable length: 2 meters
 USB version: version 1.1
 Optical isolation: no
 Serial interface RS-232, D-SUB 9 Female plug compatible with Cermate H.M.I com1

Max current: 120mA at 5VDC
 Max humidity: 85%

UR23 version 1.0

Installation

D-SUB 9 male connector: The Cermate HMI has a built-in 9 Female connector accessible from the rear side of the device.

USB connector: The USB convertercable requires to connect with PC that equipped with any standard USB Type A port compliant with Universal Serial Bus Specification 1.1.

The proper operation of the interface in the computer requires the installation of a device driver. The device driver can be downloaded from the following link:
<http://www.cermate.com/>

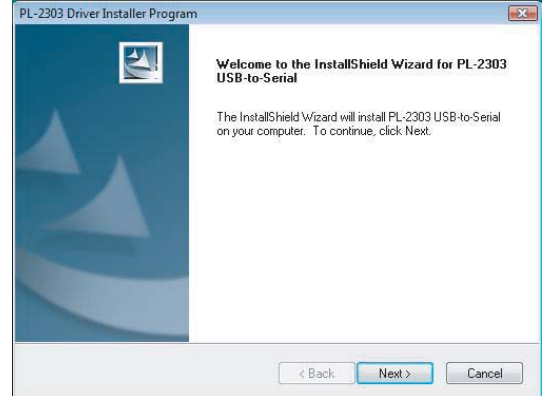
The file to be downloaded is the one identified with "UR Driver".

System requirements for driver installation:

- Pentium II or higher
- Windows 98/ME/NT/2000/XP/vista
- 64MB RAM
- 1GB hard disk space

The driver comes in a self-installing executable file with the name "UR_Series_Driver"; the installation of the driver must be done BEFORE connecting the converter to the USB port of the computer.

To install the driver, launch the **UR23a.exe** executable file, then follow the instructions on screen. You must accept the terms of the license agreement to complete the installation procedure.



Click "Next", start to install the PL-2303 USB-to-Serial driver for the UR23 product

1

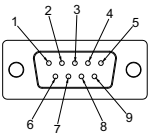
UR23 version 1.0

3

Connections

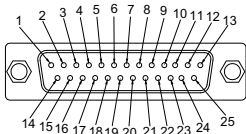
D-SUB 09M (RS232) interface

Pin	Description
1	None
2	RS-232 RXD/RS-232 TXD
3	RS-232 TXD/RS-232 RXD
4	None
5	GND
6	None
7	RTS/CTS
8	CTS/RTS
9	None



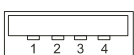
D-SUB 25M (RS232/422/485) interface

Pin	Description	Pin	Description
1	Chassis ground	14	RS-422 TXD+ and RS-485 +
2	RS-232 TXD	15	RS-422 TXD- and RS-485 -
3	RS-232 RXD	16	RS-422 RXD+
4	RS-232 RTS	17	RS-422 RXD-
5	RS-232 CTS	18	TTL TX
6	Function as DSR	19	TTL RX
7	Signal ground	20	Function as DTR
8	Function as CD	21	None
9	TTL RTS	22	Function as RI
10	TTL CTS	23	RS-422 RTS+
11	None	24	RS-422 RTS-
12	RS-422 CTS+	25	5V input jumper selectable
13	RS-422 CTS-		



USB interface

Pin	Description
1	VCC +5V
2	D- Data -
3	D+ Data +
4	GND Ground



UR23 version 1.0

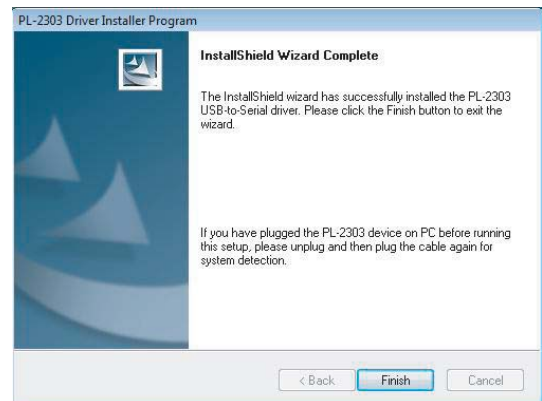
2

UR23 version 1.0

4

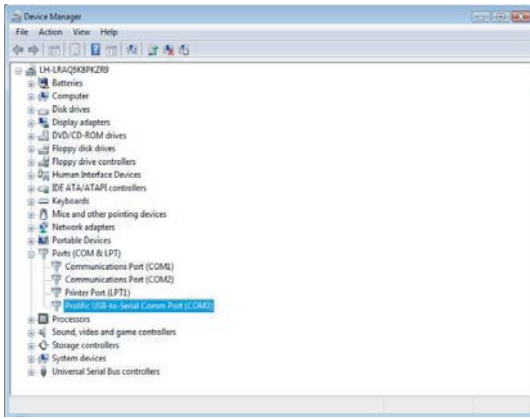


Select "I accept the terms of the license agreement" and then click "Next"



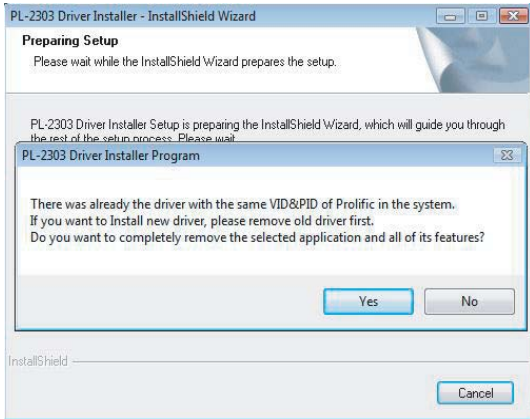
Click "Finish" to complete the installation, now you can plug the converter to the USB port of the computer.

You can check the Device Manager to see the **Prolific USB-to-Serial Comm Port(Com Port)**



Uninstalling the device Driver

If you want to remove the USB-CONVERTERCABLE device driver, follow the steps: Launch the "UR23a.exe" executable file. It will show a window to ask if you want to completely remove the selected application and all of its features?



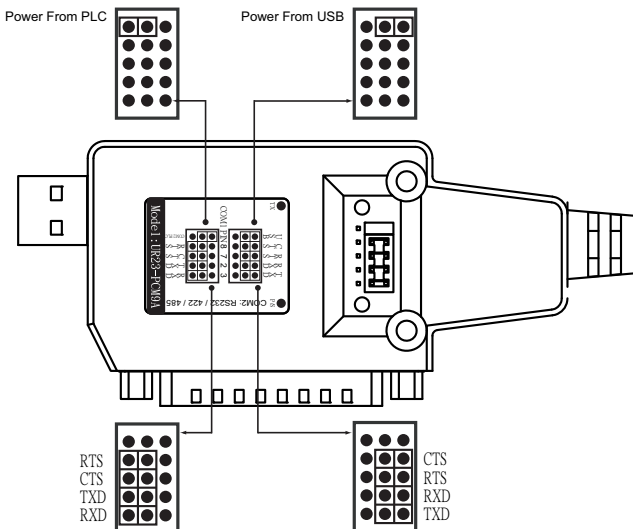
Please Click "YES" to remove the device Driver.

UR23 version 1.0



Click "Finish" The device driver uninstall completed.

Jumper Selection



UR23 version 1.0

Technical Safety Notes

Qualified personnel

The device should only be used by qualified personnel. Qualified personnel as referred to in safety guidelines in this documentation are persons who are authorized to commission, ground, and tag circuits, equipment, and systems in accordance with established safety practice.

The equipment/system or the system components may only be used for the applications described in this manual, and only in combination with the equipment, components, and devices of other manufacturers as far as this is recommended or permitted by Cermate.

The product will function correctly and safely only if it is transported, stored, set up, and installed as intended, and operated and maintained with care.

Warnings

- Do not use this product near water or install it in areas subject to excessive dust, oily mist, conductive dust, corrosive gas and flammable gas.
- Do not mount this product on the an unstable location.
- Do not mount this product subject to high temperature, moisture, or rain.
- To avoid damage of internal components, do not place the product on a vibrating surface.
- Your device and its enhancements may contain small parts. Please keep them out of the reach of small children.

5

UR23 version 1.0

7

Indicated loss of life, severe personal injury, or substantial property damage will result if proper precautions are not taken.

Disposal Instructions

Do not throw this electronic device into the trash when discarding. To minimize pollution and ensure utmost protection of the global environment, please recycle.

Copyright Declaration

No part of this publication may be reproduced, stored in a retrieval system, or transmitted, in any form or by any means, electronically, by photocopy, recording or otherwise, without the prior written permission of Cermate Inc.

Note: USB-CONVERTERCABLE is not applicable to WEEE. The converter cable is only used for Industrial PLC and not used for IT or consumer products.

Reproduction of the contents of this copyrighted document, in whole or part, without written permission of Cermate Technologies Inc, is prohibited.

UR23-M9A-C01
V.1.0 08.01.2008

Copyright © 2008 Cermate Technologies Inc.
7F-1, No.168, Lien Cheng Rd., Chung-Ho City, Taipei County, Taiwan
www.cermate.com

6

UR23 version 1.0

8